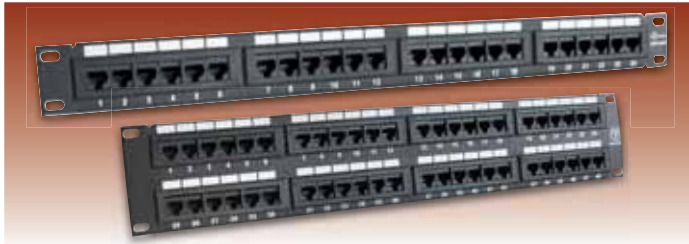
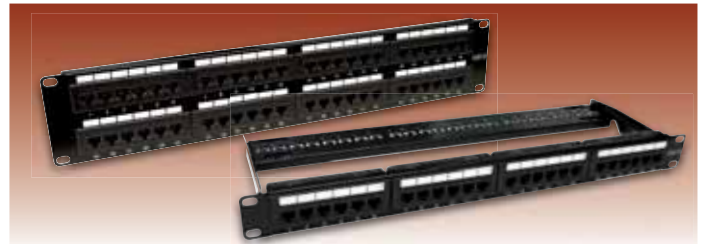


DATACOMMS ACCESSORIES



CAT5E PATCH PANELS

Code	Description
PPC24	24 Port 1U 19" RJ45 Patch Panel
PPC48	48 Port 2U 19" RJ45 Patch Panel
Info:	Conform to EIA/TIA 5688.2 568A and 568B wired
Box QTY	1
Price List Page No.	12



CAT6 PATCH PANELS

Code	Description
PPC24CAT6	24 Port 1U 19" RJ45 Patch Panel
PPC48CAT6	48 Port 2U 19" RJ45 Patch Panel
Info:	Conform to EIA/TIA 5688.2 568A and 568B wired
Box QTY	1
Price List Page No.	12



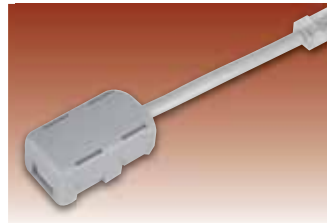
CAT5E/CAT6 JUNCTION BOXES

Code	Description
SM314	CAT5E Black
SM315	CAT6 Black
Box QTY	10
Price List Page No.	13



IDC INSTALLATION TOOLS

Code	Description
LJ5002	Professional IDC Tool with Pouch
IDCT	Plastic IDC Tool
Box QTY	12
Price List Page No.	12



LINE ADAPTORS

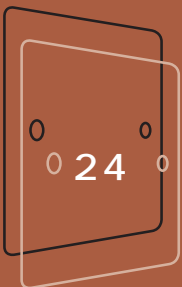
Code	Description
BT4503	Secondary
BT4505	Master
Info:	RJ45 Plug to UK Telephone Socket. Enables Voice Equipment to be used on CAT5E and CAT6 Networks
Box QTY	12
Price List Page No.	12



CABLE TESTER

Code	Description
XT468	Structured Wiring Cable Tester
Info:	Economically priced for confirmation of wiring connection status on RJ45 based networks. Includes Master and Remote in a handy carry pouch.
Box QTY	12
Price List Page No.	12

Datacomms Accessories



DIPLEX & QUAD MODULAR INSERTS

Code	Description
SX7001WH	Radio and TV Inserts
SX7003WH	Radio, TV and 2 x Satellite Inserts
Box QTY	10
Price List Page No.	12

DATACOMMS ACCESSORIES



CAT5E RJ45 DATA MODULE

Code	Description
SM303 MHK5E	Standard 25mm x 50mm size
Info:	Conform to EIA/TIA 5688.2 568A and 568B wired

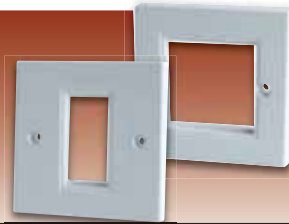
Box QTY	10	Price List Page No.	12
---------	----	---------------------	----



CAT6 RJ45 DATA MODULE

Code	Description
SM606 CAT6	Standard 25mm x 50mm size
Info:	Conform to EIA/TIA 5688.2 568A and 568B wired

Box QTY	10	Price List Page No.	12
---------	----	---------------------	----



STANDARD FACE PLATES

Code	Description
SM303 PBMSX	1 Module c/w Fixing Screws
SM303 PBMDX	2 Module c/w Fixing Screws

Box QTY	10	Price List Page No.	13
---------	----	---------------------	----



2 MODULE FACE PLATE SOFT EDGE

Code	Description
SM303 PPMDA	Standard single gang (86x86mm). Fixing screws attached
Info:	Surface box (SM625MG) available on page 18.

Box QTY	10	Price List Page No.	13
---------	----	---------------------	----



QUAD FACE PLATE

Code	Description
SM303 PCWH	4 Module c/w Fixing Screws

Box QTY	10	Price List Page No.	13
---------	----	---------------------	----



BLANKS FOR ALL FACE PLATES

Code	Description
SM303BAWH	Quarter Blank 12.5mm x 50mm
SM303BBWH	Half Blank 25mm x 50mm

Box QTY	20	Price List Page No.	13
---------	----	---------------------	----



TELEPHONE SOCKETS

Code	Description
SM303MASTWH	Master Socket
SM303SECWH	Secondary Socket

Box QTY	10	Price List Page No.	13
---------	----	---------------------	----



CO-AXIAL / SATELLITE SOCKETS

Code	Description
SMPAL	TV/FM Female Co-Axial Socket
SMPALMALE	Male TV/FM/DAB Co-Axial Socket
SMSAT	F Satellite Socket

Box QTY	10	Price List Page No.	13
---------	----	---------------------	----



CAT5E FLUSH MOUNTED SOCKETS

Code	Description
SM3031	Single Outlet Complete
SM3032	Twin Outlet Complete
Info:	c/w IDC Connections

Box QTY	20	Price List Page No.	13
---------	----	---------------------	----



CAT5E FLUSH MOUNTED SOCKETS SOFT EDGE

Code	Description
SM3041	Single Outlet Complete
SM3042	Twin Outlet Complete
Info:	c/w IDC Connections

Box QTY	20	Price List Page No.	13
---------	----	---------------------	----



CAT6 FLUSH MOUNTED SOCKETS

Code	Description
SM6061	Single Outlet Complete
SM6062	Twin Outlet Complete
Info:	c/w IDC Connections

Box QTY	20	Price List Page No.	13
---------	----	---------------------	----



CAT6 FLUSH MOUNTED SOCKETS SOFT EDGE

Code	Description
SM6041	Single Outlet Complete
SM6042	Twin Outlet Complete
Info:	c/w IDC Connections

Box QTY	20	Price List Page No.	13
---------	----	---------------------	----

